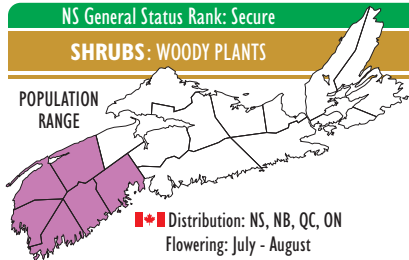




POPULATION RANGE



■ Distribution: NS, NB, QC, ON
Flowering: July - August

SIZE: Up to 2 m tall.

LEAVES: In groups of 7 leaflets along a finely-hairy branch off the main stem (rachis). The undersides are minutely hairy and there are 12-25 teeth along the leaf edges. The base of the rachis has two long, narrow leaf-like structures (stipules) with their edges rolled around the rachis.

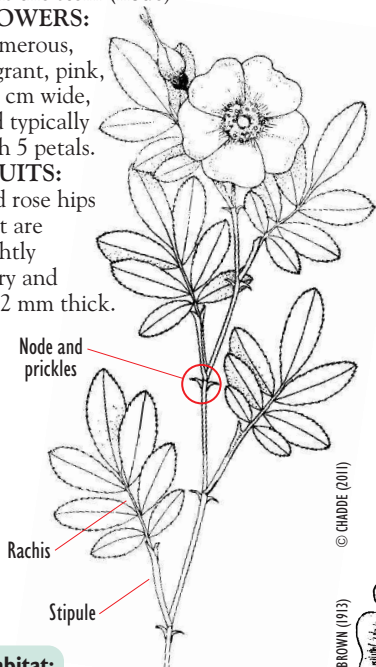
STEM: Woody with short (3-6 mm), flattened, recurved prickles that are mostly restricted to where the rachis joins the stem (node).

FLOWERS:

Numerous, fragrant, pink, 4-5 cm wide, and typically with 5 petals.

FRUITS:

Red rose hips that are slightly hairy and 7-12 mm thick.



© CHADDE (2011)

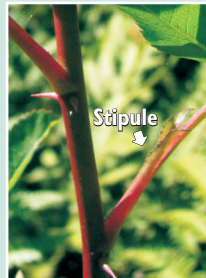


© SEAN BLANEY



7 leaflets growing from the rachis

© MEGAN CROWLEY



Stem showing prickles and stipules

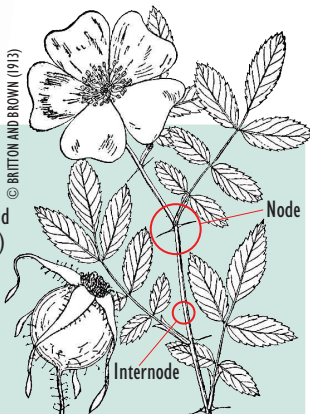
© MEGAN CROWLEY

Habitat:

The wet ground around lakeshores and in open wetlands (primarily peatlands).

Similar Species: Common Wild Rose (*Rosa virginiana*) has fewer larger teeth on the leaves and more prickles between the branching points (nodes) of the stem. Shining Rose (*Rosa nitida*) is shorter (up to 1 m) with dense, straight, narrow prickles covering the stems at the branching points (nodes) and in between (internodes). Carolina Rose (*Rosa carolina*) has fine, straight prickles at the nodes and is unlikely in wetlands.

Interesting point: Rose hips are high in vitamin C and make delicious jellies and wines.



© BRITTON AND BROWN (1913)

Common Wild Rose



Flower buds

© MEGAN CROWLEY



Rose hips (red when mature)

© MEGAN CROWLEY